

**Infrabel** is the Belgian public company that builds and maintains the 3.500 km railway lines (i.e. 7.300 km of tracks) of the national network. Already well supported by various GIS application, the Geomatics Division was looking for flexible mobile mapping system to collect new data and updates existing ones. To fulfill their requirements, the system had to limit external devices, be portable and reach absolute sub-metric accuracy.



*In red, the railways surveyed with imajbox in 2013*

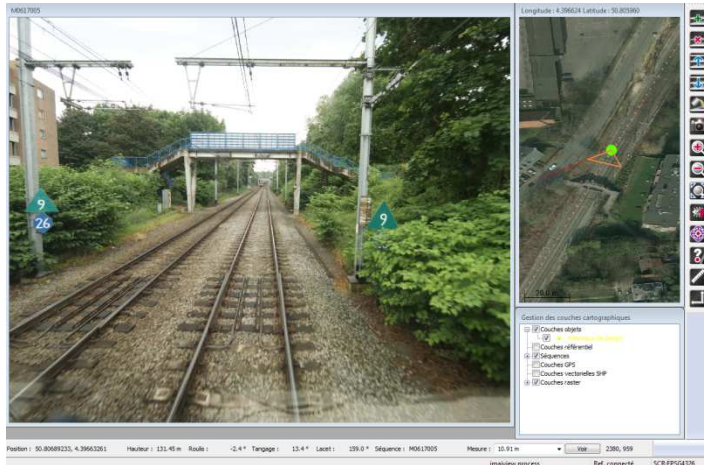
As Belgian reseller of **imajing** solutions, **DrivenBy** demonstrated **imajbox**® can meet such specifications by using the latest enhancements of the technology : rigorous configuration, Doppler radar DMI measurements, dGPS post-processing (*Walcors, Flepos* or *SmartNet BE* network powered by *DrivenBy*) and integrated processes in the existing *Infrabel* production tools. **imajbox** appeared to be a unique solution on the market with the best compromised between accuracy and flexibility.



*imajbox setup*



Since end 2012, *Infrabel* is fully autonomous and frequently install in a few minutes two **imajbox** (front and rear) on specific survey trains. Training and support have been supplied directly by *DrivenBy* team. All the main lines (i.e. 6.300 km of tracks) have been surveyed in less than 40 days in 2013. Data were post-processed internally by *Infrabel* and hosted by *DrivenBy* to be shared with other departments and sub-contractors through Web services (*imajnet, ArcGIS, Qgis*, etc.).

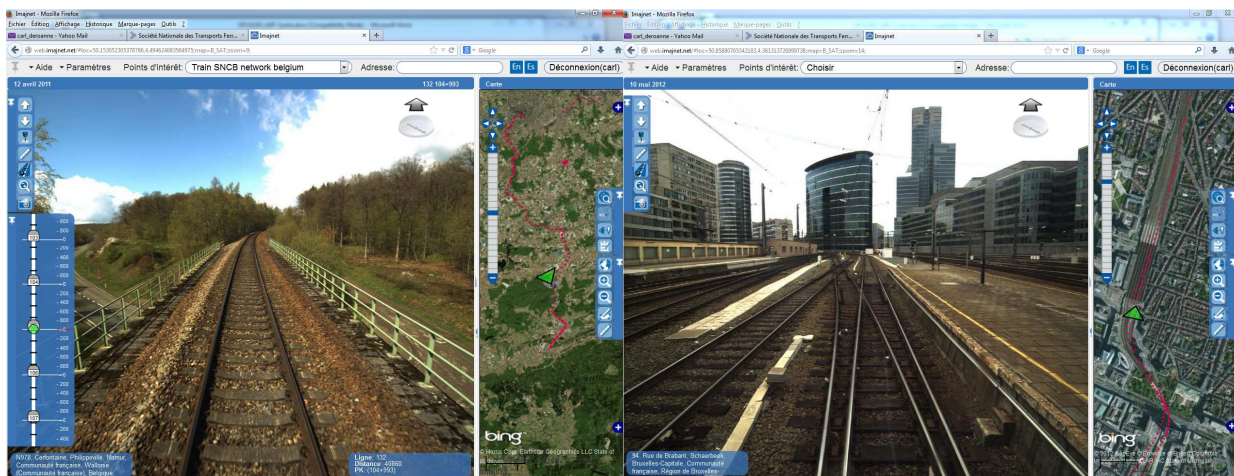


*imajview software to navigate on the images, map assets, measure and many more functionalities*



Although new requests keep growing from other departments, first uses of the data are :

- implementation of ETCS,
- assets inventory and updates,
- linear referencing,
- virtual navigation all over the network,
- etc.



*Web application imajnet*